

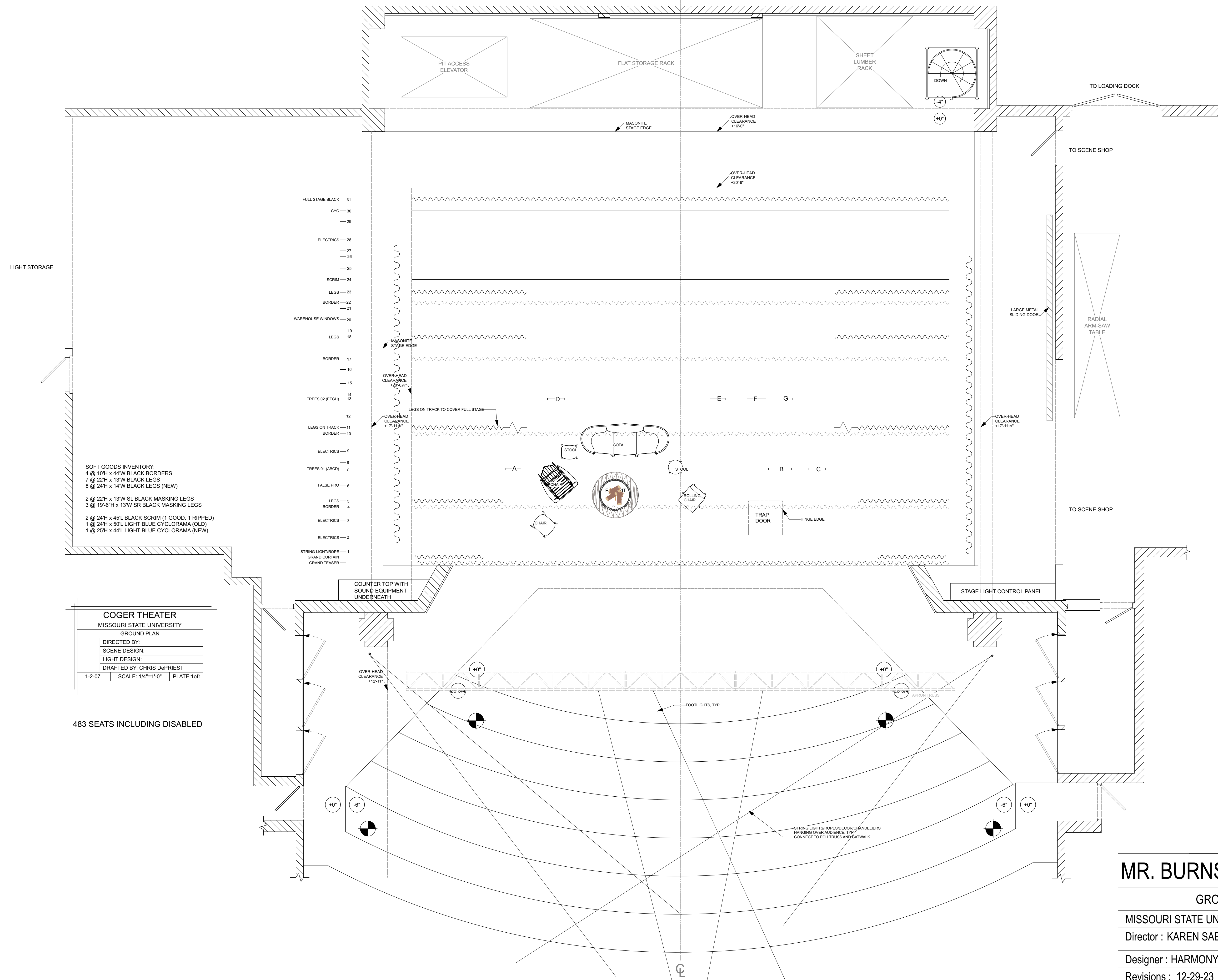
- SOFT GOODS INVENTORY:**
- 4 @ 10'H x 44'W BLACK BORDERS
 - 7 @ 22'H x 13'W BLACK LEGS
 - 8 @ 24'H x 14'W BLACK LEGS (NEW)
 - 2 @ 22'H x 13'W SL BLACK MASKING LEGS
 - 3 @ 19'-6"H x 13'W SR BLACK MASKING LEGS
 - 2 @ 24'H x 45'L BLACK SCRIM (1 GOOD, 1 RIPPED)
 - 1 @ 24'H x 50'L LIGHT BLUE CYCLORAMA (OLD)
 - 1 @ 25'H x 44'L LIGHT BLUE CYCLORAMA (NEW)

COGER THEATER		
MISSOURI STATE UNIVERSITY		
GROUND PLAN		
DIRECTED BY:		
SCENE DESIGN:		
LIGHT DESIGN:		
DRAFTED BY: CHRIS DePRIEST		
1-2-07	SCALE: 1/4"=1'-0"	PLATE: 1of1

483 SEATS INCLUDING DISABLED

MR. BURNS, A POST ELECTRIC PLAY

GROUND PLAN COMPOSITE	Date : 11/15/23
MISSOURI STATE UNIVERSITY - COGER THEATRE	Scale : 1/4" = 1'-0"
Director : KAREN SABO	Sht-1 OF
Designer : HARMONY SCHREEFEL	
Revisions : 12-29-23	

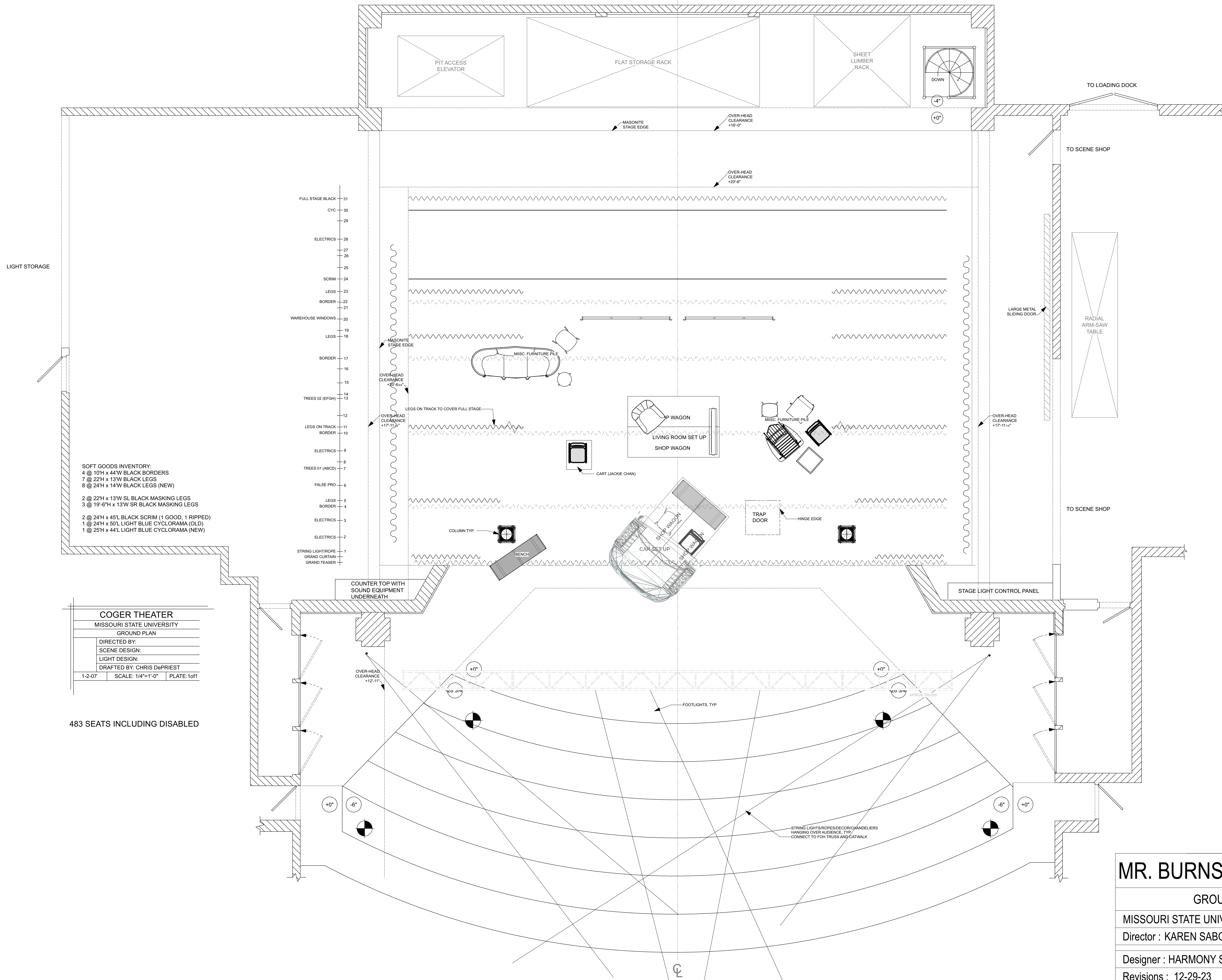


SOFT GOODS INVENTORY:
 4 @ 10'H x 44'W BLACK BORDERS
 7 @ 22'H x 13'W BLACK LEGS
 9 @ 24'H x 14'W BLACK LEGS (NEW)
 2 @ 22'H x 13'W SL BLACK MASKING LEGS
 3 @ 19'-6"H x 13'W SR BLACK MASKING LEGS
 2 @ 24'H x 45'L BLACK SCRIM (1 GOOD, 1 RIPPED)
 1 @ 24'H x 50'L LIGHT BLUE CYCLORAMA (OLD)
 1 @ 25'H x 44'L LIGHT BLUE CYCLORAMA (NEW)

COGER THEATER
 MISSOURI STATE UNIVERSITY
 GROUND PLAN
 DIRECTED BY:
 SCENE DESIGN:
 LIGHT DESIGN:
 DRAFTED BY: CHRIS DePRIEST
 1-2-07 SCALE: 1/4"=1'-0" PLATE: 1of1

483 SEATS INCLUDING DISABLED

MR. BURNS, A POST ELECTRIC PLAY	
GROUND PLAN A1	Date : 11/15/23
MISSOURI STATE UNIVERSITY - COGER THEATRE	Scale : 1/4" = 1'=0"
Director : KAREN SABO	Sht-1a OF
Designer : HARMONY SCHREEFEL	
Revisions : 12-29-23	

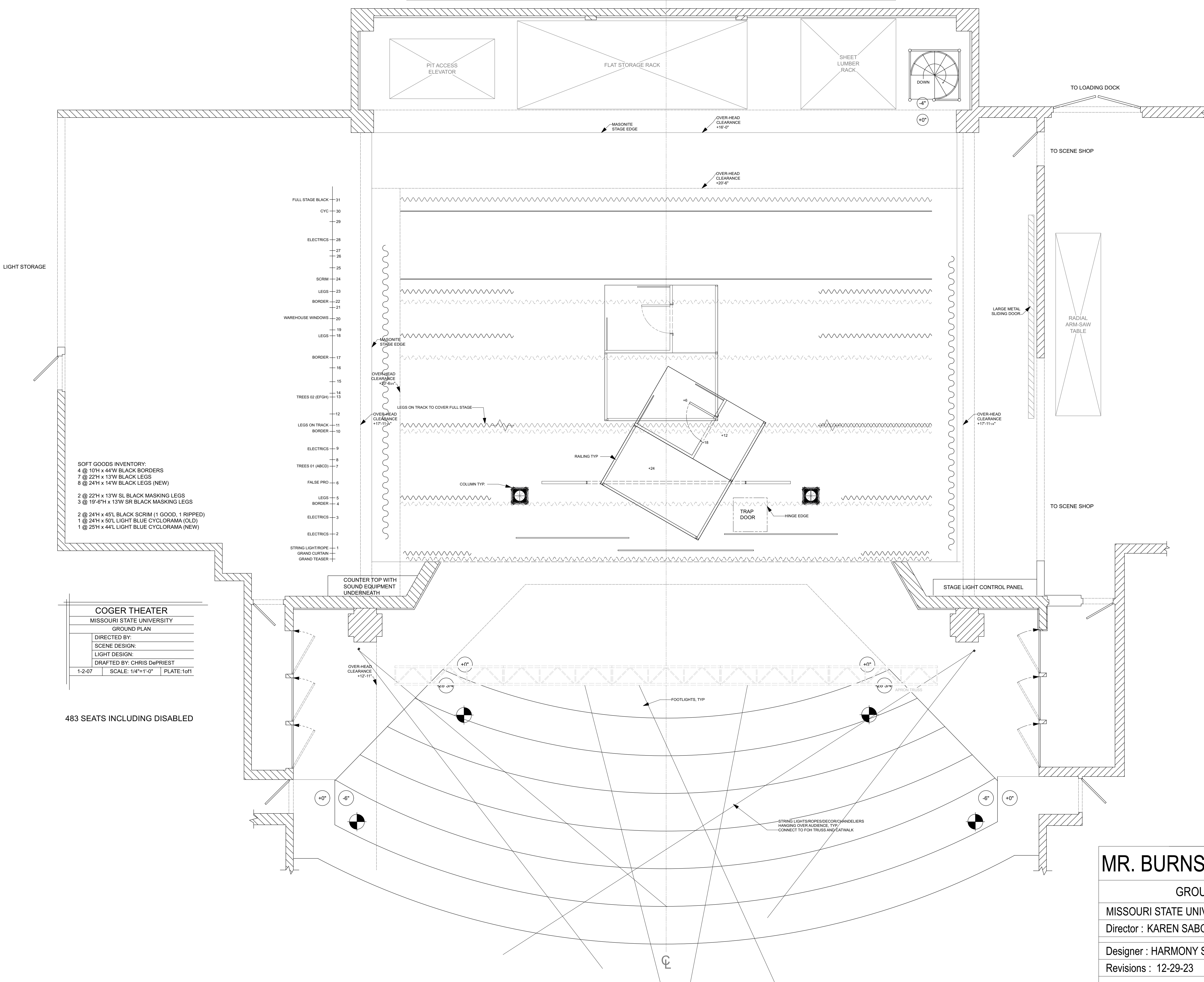


- SOFT GOODS INVENTORY:**
- 4 @ 10'H x 44'W BLACK BORDERS
 - 7 @ 22'H x 13'W BLACK LEGS
 - 8 @ 24'H x 14'W BLACK LEGS (NEW)
 - 2 @ 22'H x 13'W SL BLACK MASKING LEGS
 - 3 @ 19'-6"H x 13'W SR BLACK MASKING LEGS
 - 2 @ 24'H x 45'L BLACK SCRIM (1 GOOD, 1 RIPPED)
 - 1 @ 24'H x 50'L LIGHT BLUE CYCLORAMA (OLD)
 - 1 @ 25'H x 44'L LIGHT BLUE CYCLORAMA (NEW)

COGER THEATER		
MISSOURI STATE UNIVERSITY		
GROUND PLAN		
DIRECTED BY:		
SCENE DESIGN:		
LIGHT DESIGN:		
DRAFTED BY:	CHRIS DePRIEST	
1-2-07	SCALE: 1/4"=1'-0"	PLATE: 1of1

483 SEATS INCLUDING DISABLED

MR. BURNS, A POST ELECTRIC PLAY		
GROUND PLAN A2		Date : 11/15/23
MISSOURI STATE UNIVERSITY - COGER THEATRE		Scale : 1/4" = 1'=0"
Director : KAREN SABO		Sht-1b OF
Designer : HARMONY SCHREEFEL		
Revisions : 12-29-23		



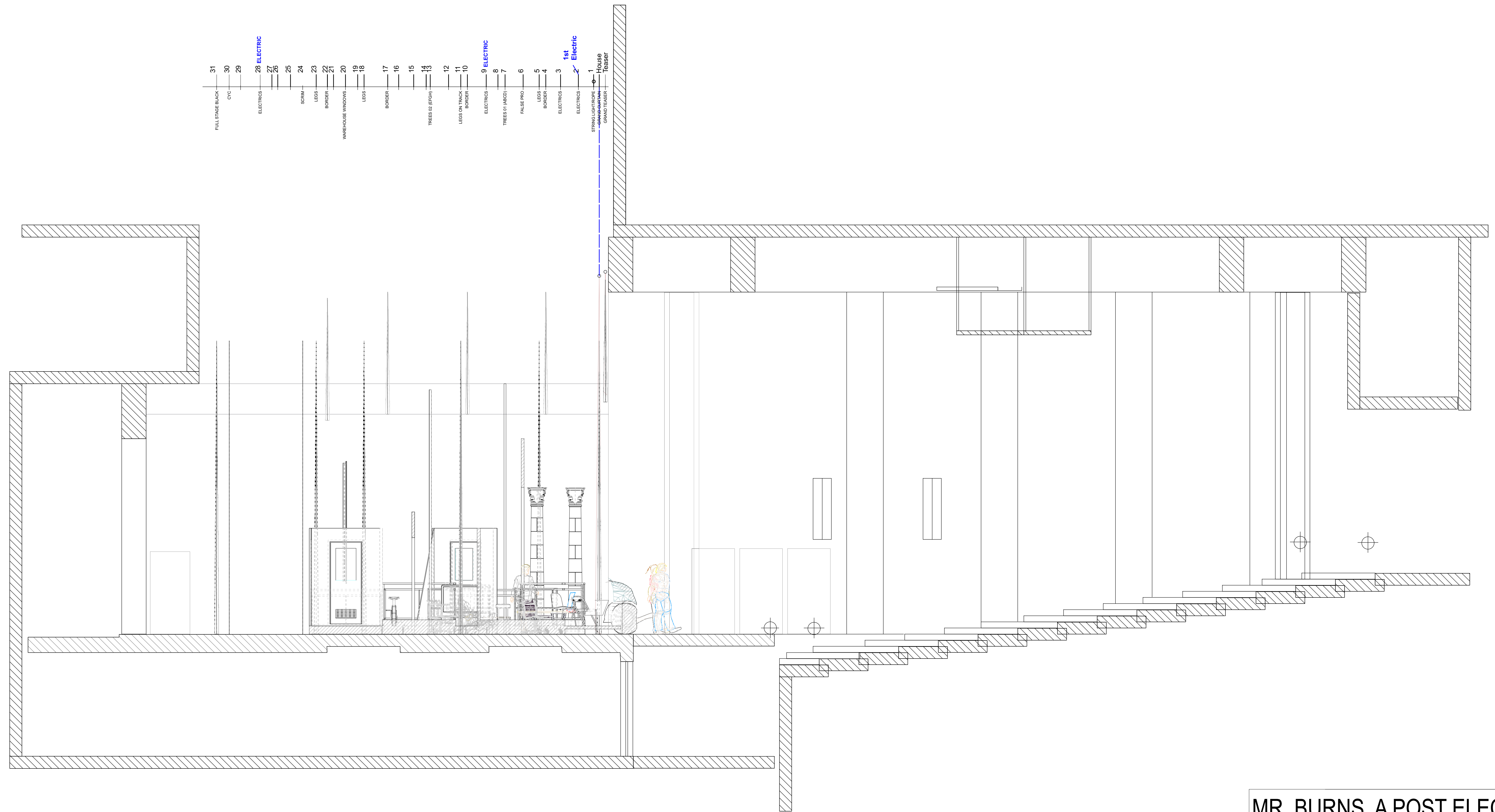
SOFT GOODS INVENTORY:
 4 @ 10'H x 44'W BLACK BORDERS
 7 @ 22'H x 13'W BLACK LEGS
 8 @ 24'H x 14'W BLACK LEGS (NEW)
 2 @ 22'H x 13'W SL BLACK MASKING LEGS
 3 @ 19'-6"H x 13'W SR BLACK MASKING LEGS
 2 @ 24'H x 45'L BLACK SCRIM (1 GOOD, 1 RIPPED)
 1 @ 24'H x 50'L LIGHT BLUE CYCLORAMA (OLD)
 1 @ 25'H x 44'L LIGHT BLUE CYCLORAMA (NEW)

COGER THEATER		
MISSOURI STATE UNIVERSITY		
GROUND PLAN		
DIRECTED BY:		
SCENE DESIGN:		
LIGHT DESIGN:		
DRAFTED BY:	CHRIS DePRIEST	
1-2-07	SCALE: 1/4"=1'-0"	PLATE: 1of1

483 SEATS INCLUDING DISABLED

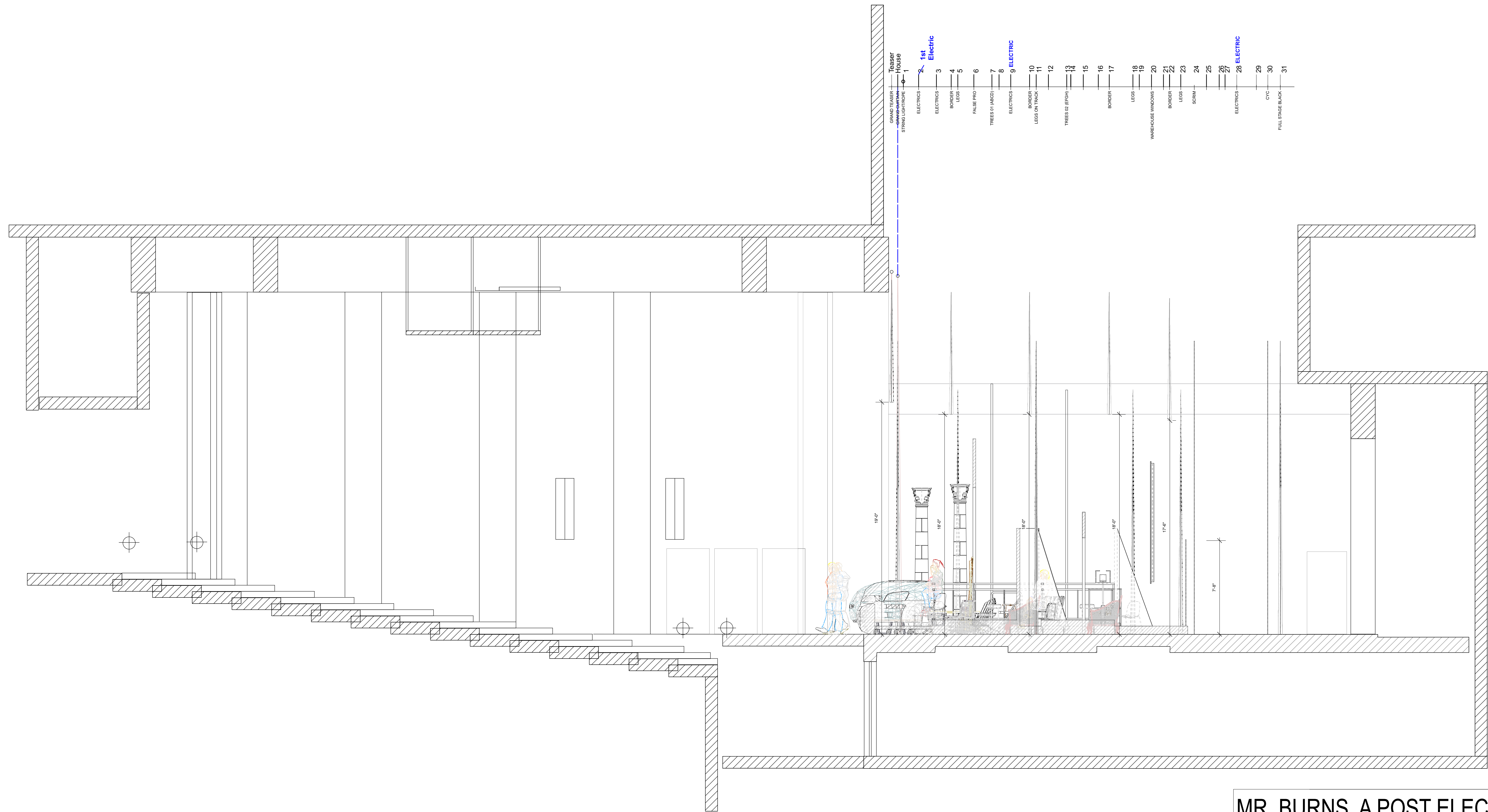
MR. BURNS, A POST ELECTRIC PLAY

GROUND PLAN A3		Date : 11/15/23
MISSOURI STATE UNIVERSITY - COGER THEATRE		Scale : 1/4" = 1'=0"
Director : KAREN SABO		Sht-1c OF
Designer : HARMONY SCHREEFEL		
Revisions : 12-29-23		



31 FULL STAGE BACK
 30 CYC
 29
 28 ELECTRIC
 27
 26
 25
 24 SCIM
 23 LEGS
 22 BORDER
 21
 20 WAREHOUSE WINDOWS
 19 LEGS
 18
 17 BORDER
 16
 15
 14
 13
 12
 11 LEGS ON TRACK
 10 BORDER
 9 ELECTRIC
 8
 7
 6 FALSE PRO
 5 LEGS
 4 BORDER
 3 ELECTRICS
 2 1st Electric
 1
 STRING LIGHT ROPE
 GROUND TENSION
 LEGS
 TUBS

MR. BURNS, A POST ELECTRIC PLAY	
CENTERLINE SECTION SL VIEW	Date : 11/15/23
MISSOURI STATE UNIVERSITY - COGER THEATRE	Scale : 1/4" = 1'=0"
Director : KAREN SABO	Sht-5 OF
Designer : HARMONY SCHREEFEL	
Revisions : 12-29-23	



MR. BURNS, A POST ELECTRIC PLAY

CENTERLINE SECTION SR VIEW	Date : 11/15/23
MISSOURI STATE UNIVERSITY - COGER THEATRE	Scale : 1/4" = 1'-0"
Director : KAREN SABO	Sht-6 OF
Designer : HARMONY SCHREEFEL	
Revisions : 12-29-23	



MR. BURNS, A POST ELECTRIC PLAY

PERSPECTIVE A1	Date : 11/15/23
MISSOURI STATE UNIVERSITY - COGER THEATRE	Scale : NTS
Director : KAREN SABO	Sht-7 OF
Designer : HARMONY SCHREEFEL	
Revisions : 12-29-23	



MR. BURNS, A POST ELECTRIC PLAY

PERSPECTIVE A2 LIVING ROOM	Date : 11/15/23
MISSOURI STATE UNIVERSITY - COGER THEATRE	Scale : NTS
Director : KAREN SABO	Sht-7A OF
Designer : HARMONY SCHREEFEL	
Revisions : 12-29-23	



MR. BURNS, A POST ELECTRIC PLAY

PERSPECTIVE A2 CAR	Date : 11/15/23
MISSOURI STATE UNIVERSITY - COGER THEATRE	Scale : NTS
Director : KAREN SABO	Sht-7B OF
Designer : HARMONY SCHREEFEL	
Revisions : 12-29-23	



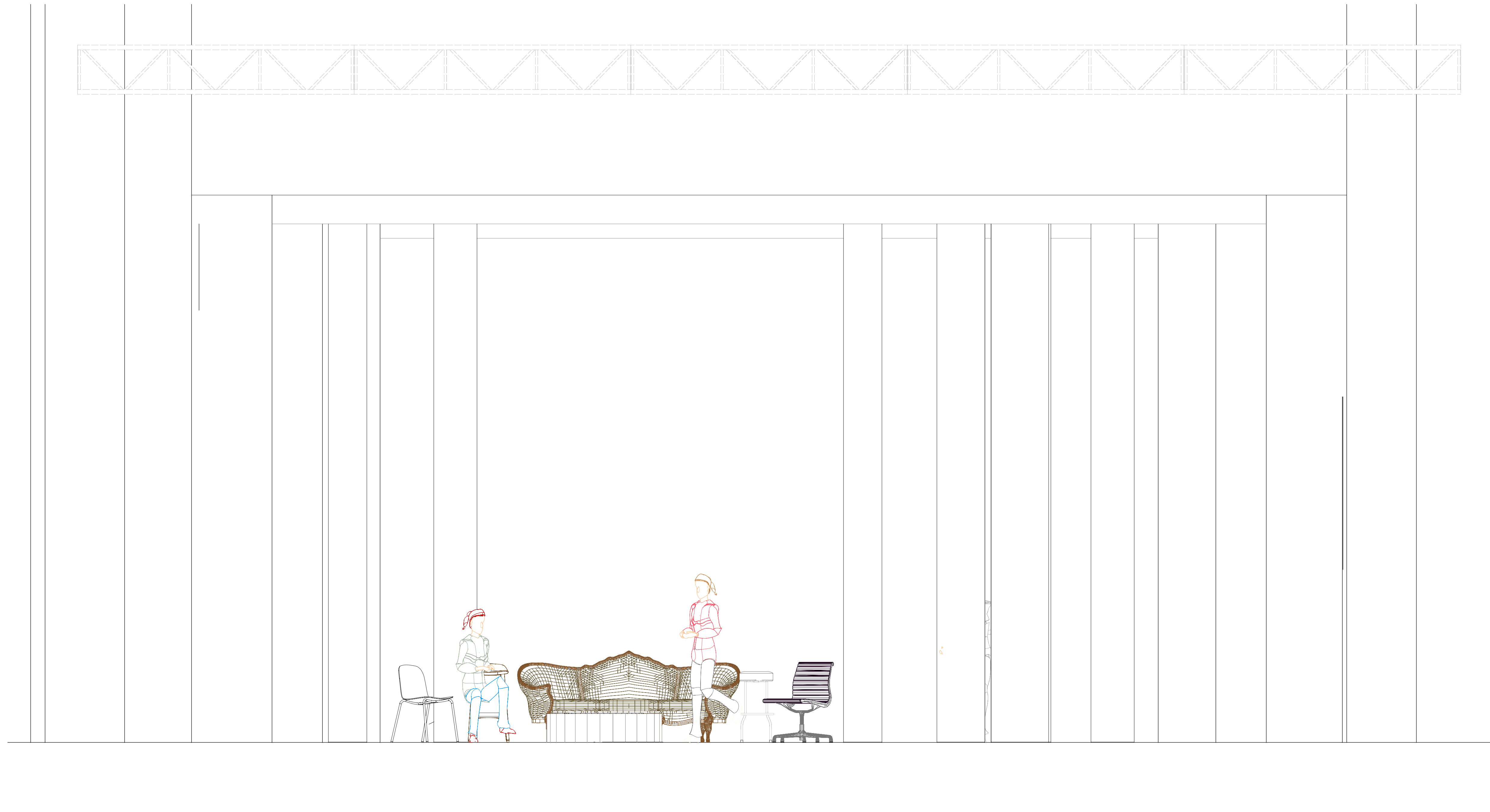
MR. BURNS, A POST ELECTRIC PLAY

PERSPECTIVE A3 OPEN	Date : 11/15/23
MISSOURI STATE UNIVERSITY - COGER THEATRE	Scale : NTS
Director : KAREN SABO	Sht-7C OF
Designer : HARMONY SCHREEFEL	
Revisions : 12-29-23	

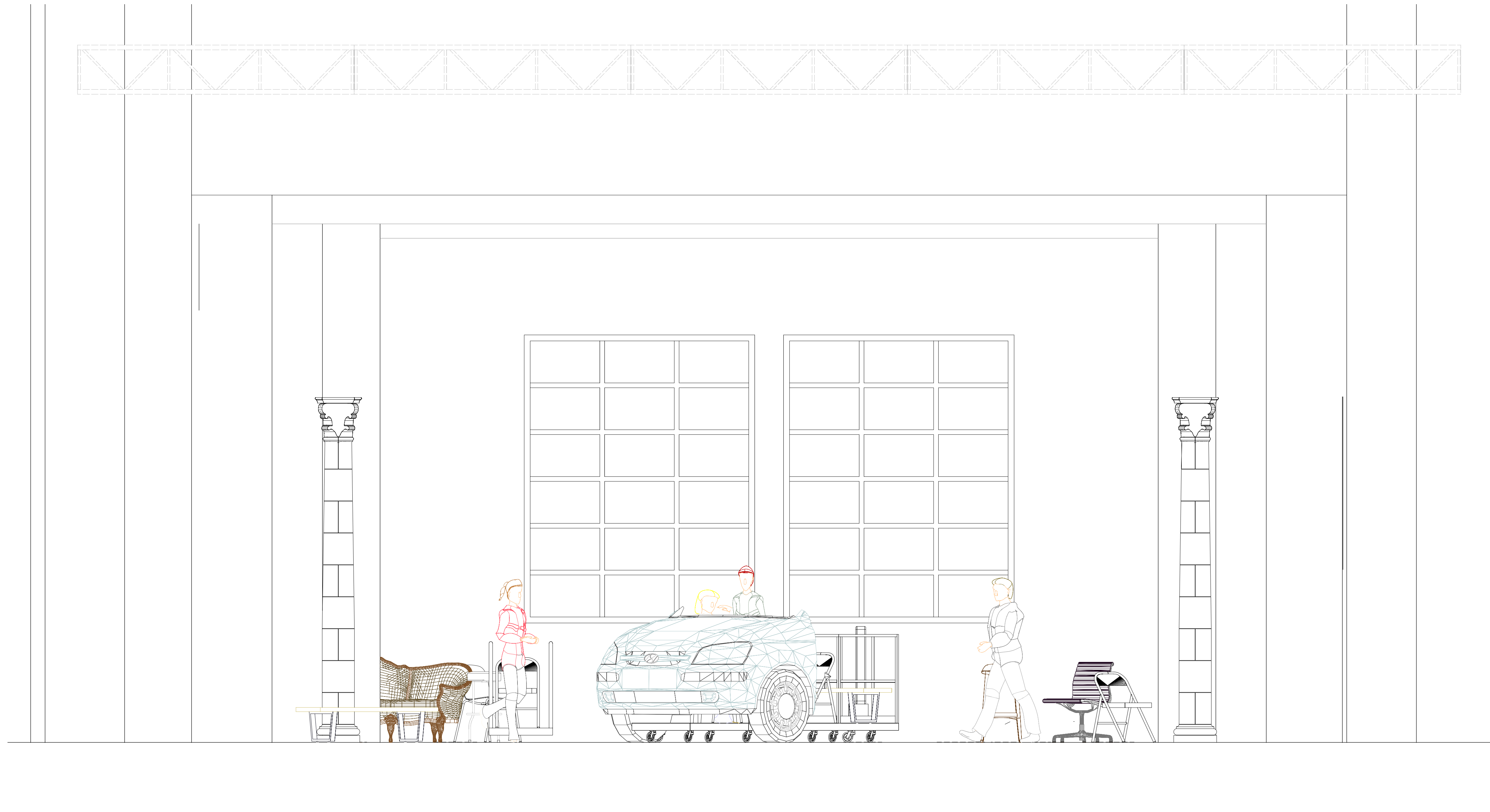


MR. BURNS, A POST ELECTRIC PLAY

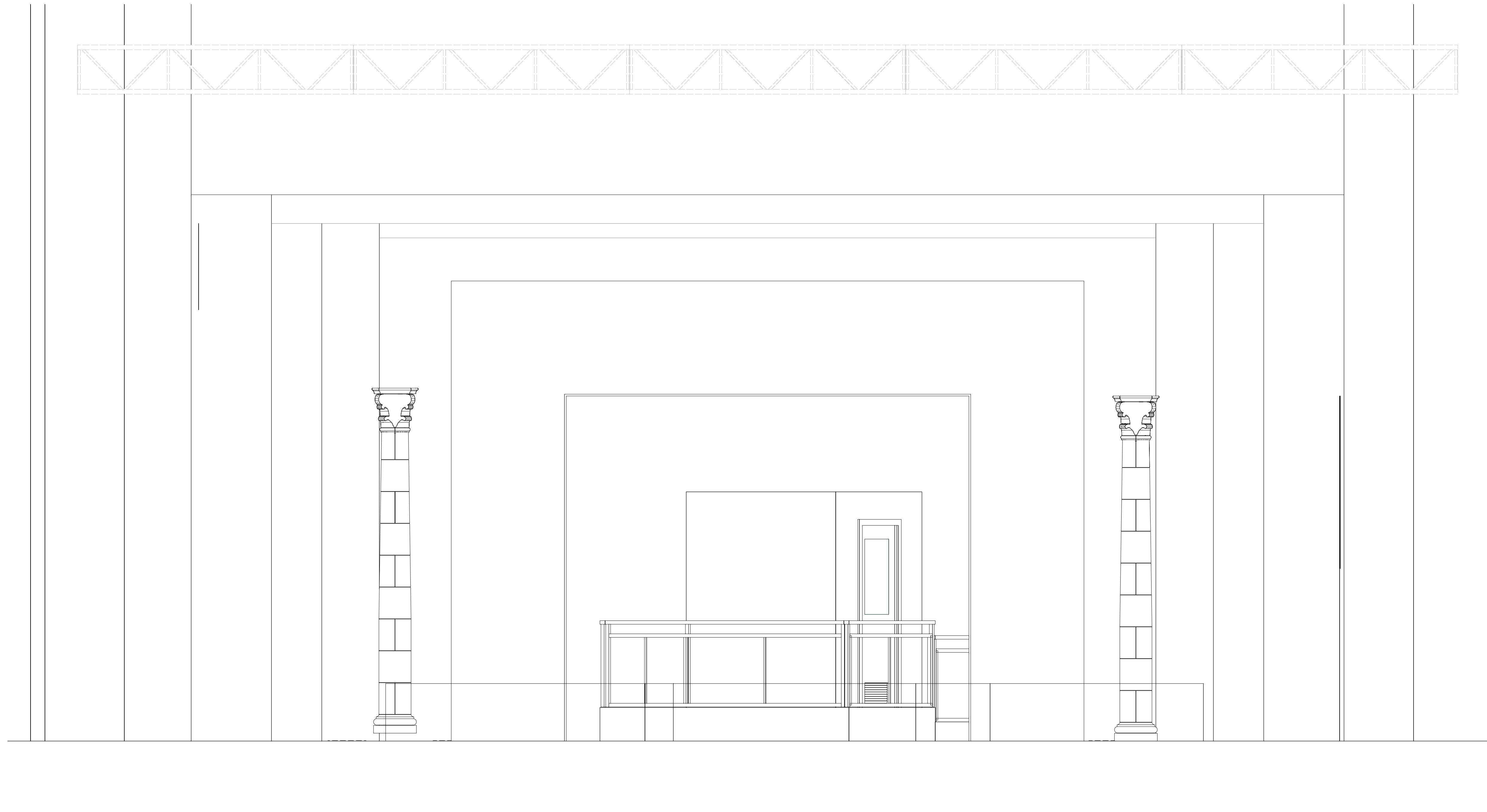
PERSPECTIVE A3 BOAT	Date : 11/15/23
MISSOURI STATE UNIVERSITY - COGER THEATRE	Scale : NTS
Director : KAREN SABO	Sht-7D OF
Designer : HARMONY SCHREEFEL	
Revisions : 12-29-23	



MR. BURNS, A POST ELECTRIC PLAY	
FRONT ELEVATION A1	Date : 11/15/23
MISSOURI STATE UNIVERSITY - COGER THEATRE	Scale : 1/2" = 1'-0"
Director : KAREN SABO	Sht-8 OF
Designer : HARMONY SCHREEFEL	
Revisions : 12-29-23	

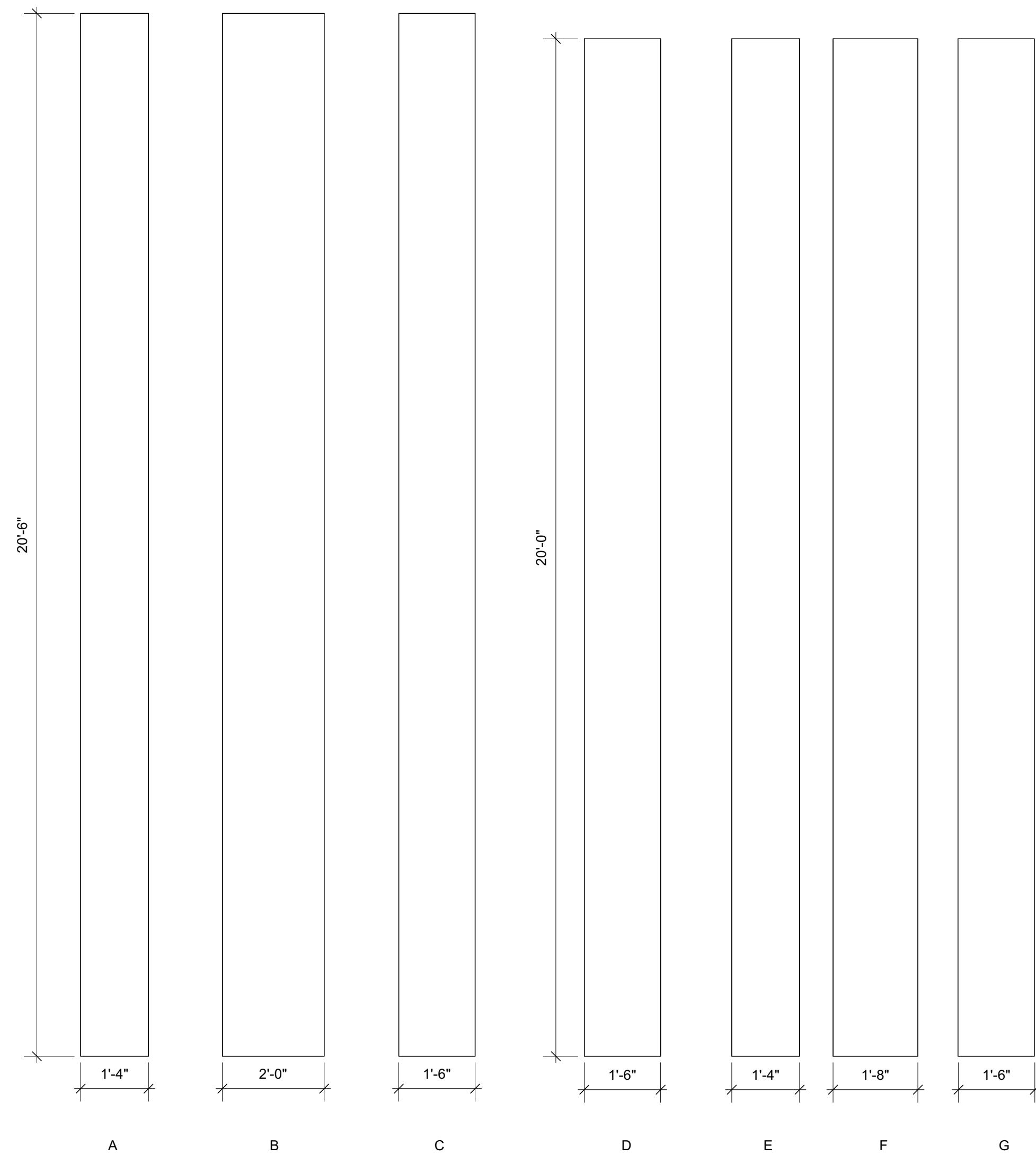


MR. BURNS, A POST ELECTRIC PLAY	
FRONT ELEVATION A2	Date : 11/15/23
MISSOURI STATE UNIVERSITY - COGER THEATRE	Scale : 1/2" = 1'-0"
Director : KAREN SABO	Sht-8A OF
Designer : HARMONY SCHREEFEL	
Revisions : 12-12-23	



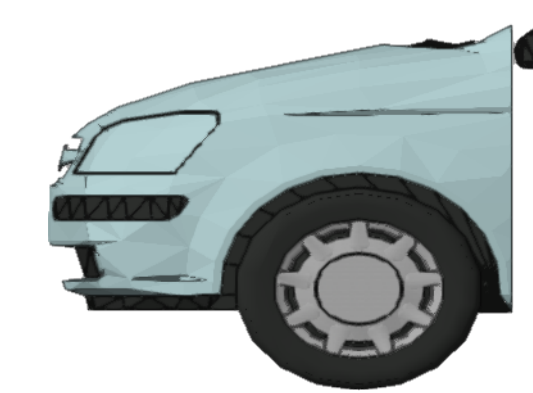
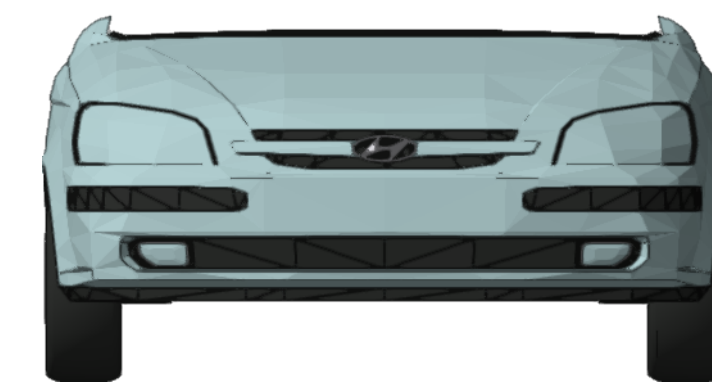
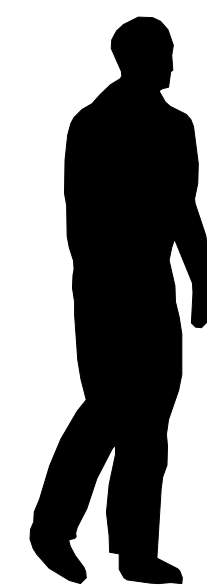
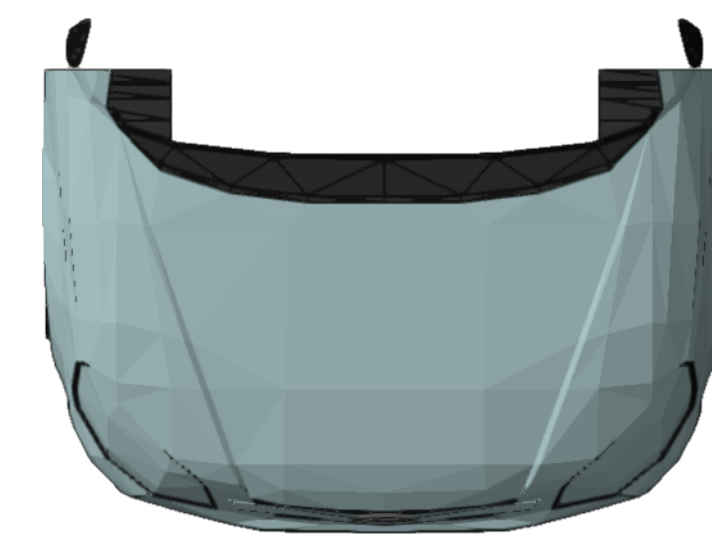
MR. BURNS, A POST ELECTRIC PLAY

FRONT ELEVATION A3	Date : 11/15/23
MISSOURI STATE UNIVERSITY - COGER THEATRE	Scale : 1/2" = 1'-0"
Director : KAREN SABO	Sht-8B OF
Designer : HARMONY SCHREEFEL	
Revisions : 12-12-23	



1 **A1 TREES FRONT VIEW**
Scale: 1/2" = 1'-0"

TREE TRUNK FACADE IS LUAUN
CUT SIDE EDGES TO BE IRREGULAR
APPLY GLUED MUSLIN (OR SIMILAR) TO CREATE FAUX BARK

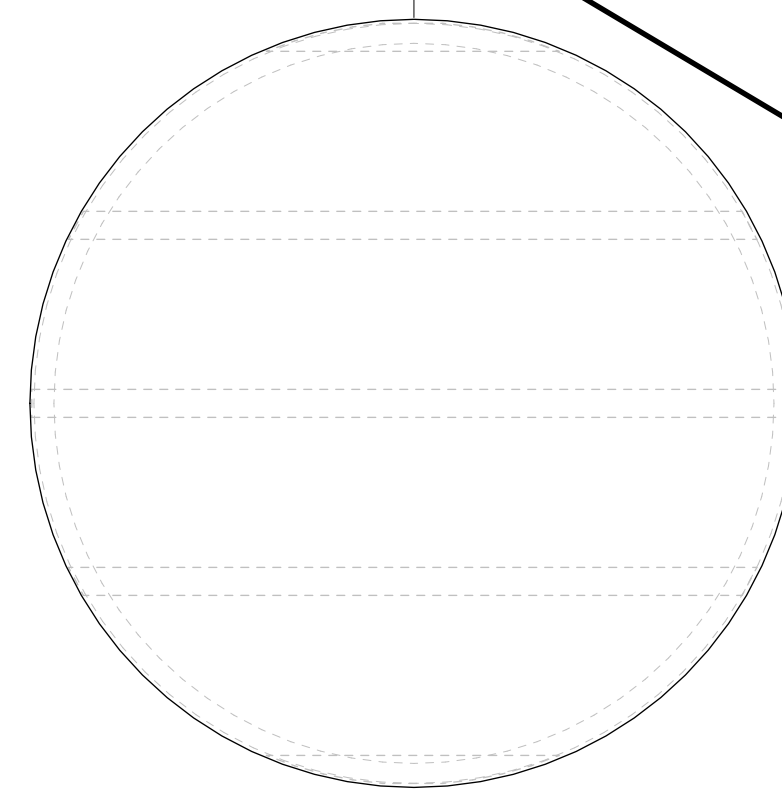


5 **A2 CAR**
Scale: 1/2" = 1'-0"

NOTE: CAR WILL BE MADE OUT OF CARDBOARD AND SHOULD BE ROUGH
-DRAWING PROVIDED TO SUGGEST SIZE AND GENERAL SHAPE
-WILL NEED TO ATTACH TO STOCK SHOP CARTS

2 **MOONLIGHT BOX FRONT**
Scale: 1/2" = 1'-0"

PAINT MOON TEXTURE ON MUSLIN WITH TRANSLUCENT FINISH
ADD APPROPRIATE LIGHT FIXTURES TO ILLUMINATE AND BACKLIGHT
COVER BACK WITH SOLID MATERIAL PAINTED WHITE



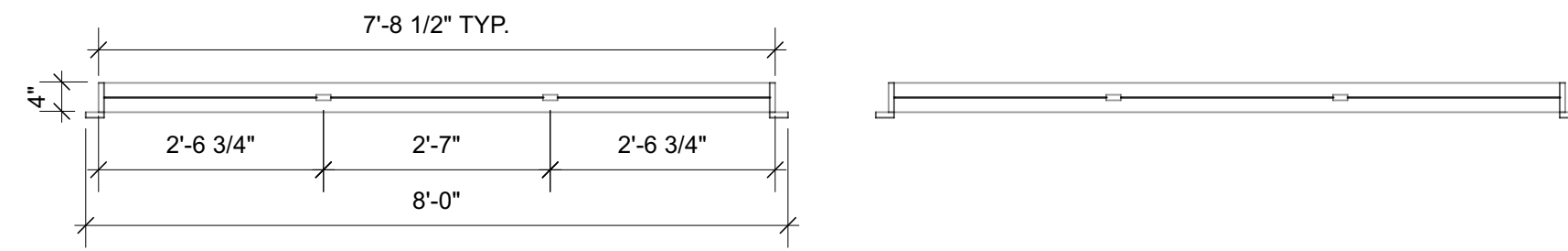
CUT

3 **MOON BOX SECTION VIEW**
Scale: 1/2" = 1'-0"

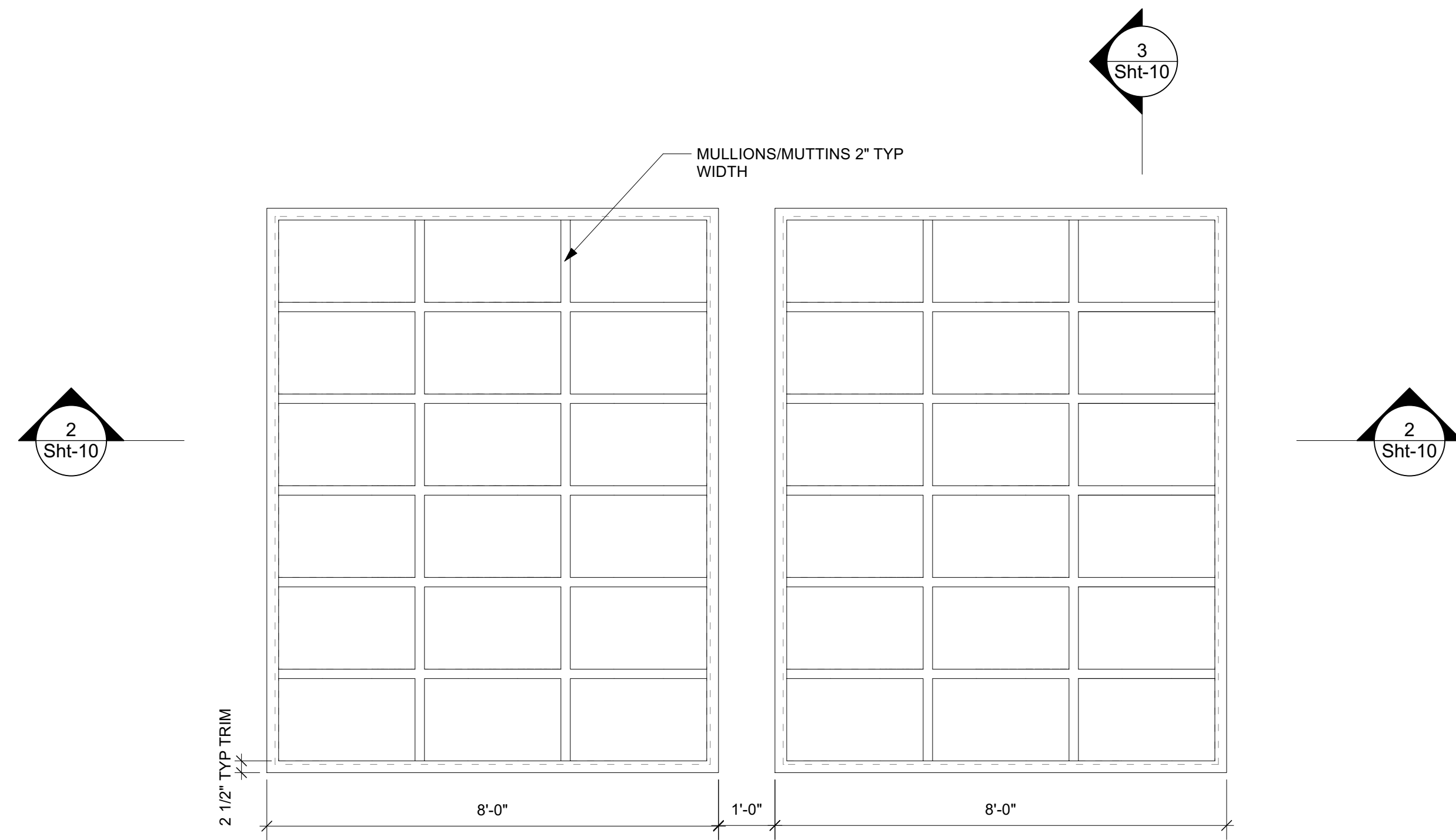
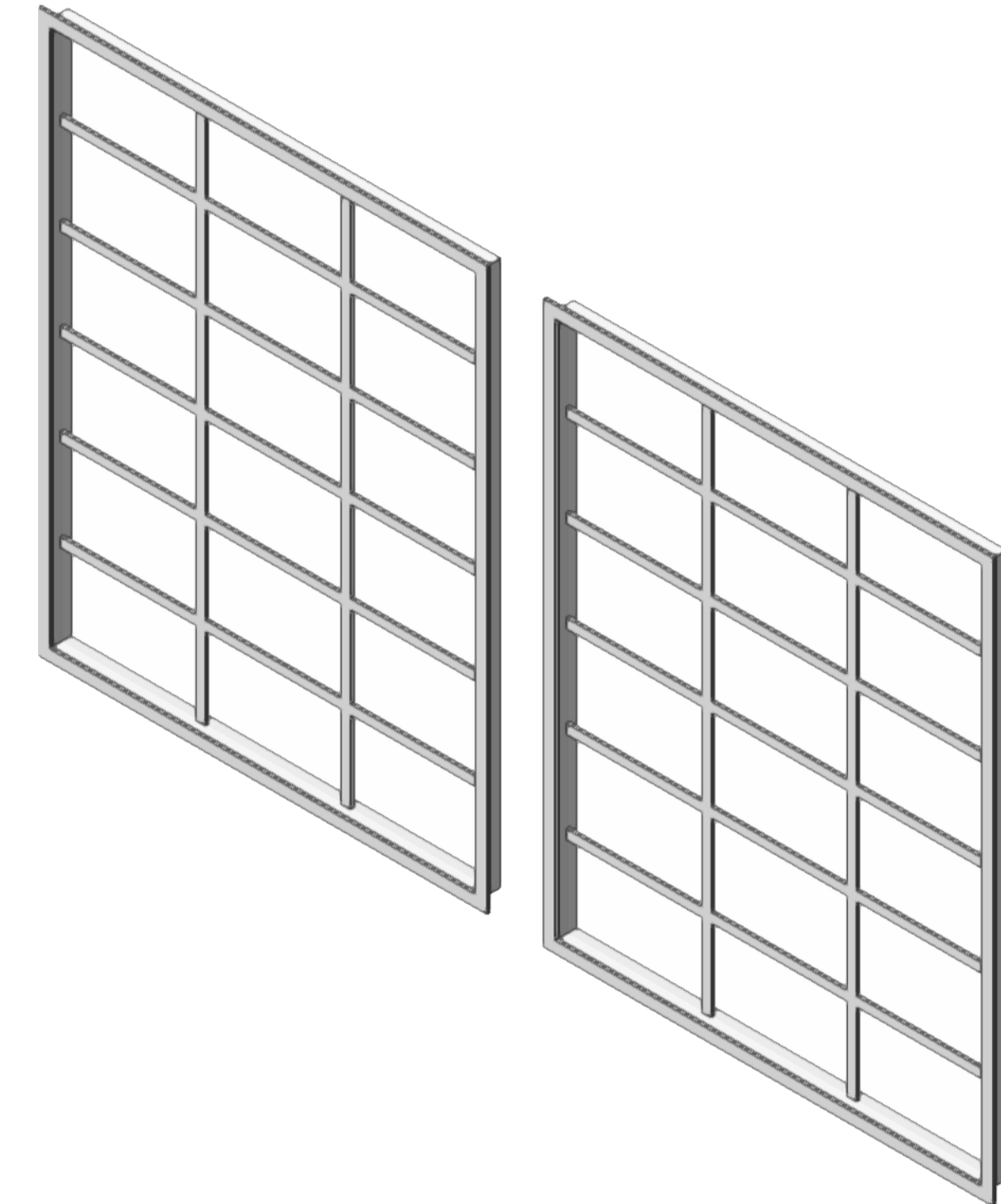


MR. BURNS, A POST ELECTRIC PLAY

A1 TREES AND MOON / A2 CAR	Date : 11/15/23
MISSOURI STATE UNIVERSITY - COGER THEATRE	Scale : 1/2" = 1'-0"
Director : KAREN SABO	Sht-9 OF
Designer : HARMONY SCHREEFEL	
Revisions : 12-29-23	

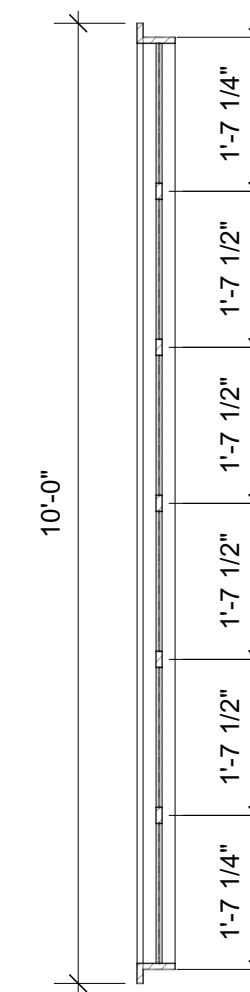


2 **A2 WAREHOUSE WALL TOP SECTION**
Scale: 1/2" = 1'-0"



1 **A2 WAREHOUSE WINDOWS FRONT VIEW**
Scale: 1/2" = 1'-0"

NOTE: BUILD TWO
-ADD BOARDS ACROSS RANDOMLY TO ADD STABILITY AND
SUGGEST BROKEN WINDOWS
-APPLY WINDOW SHRINK FILM ON BACK SIDE - WILL BE FROSTED WITH PAINT
-SOME NEED TO BE OPEN AS BROKEN GLASS



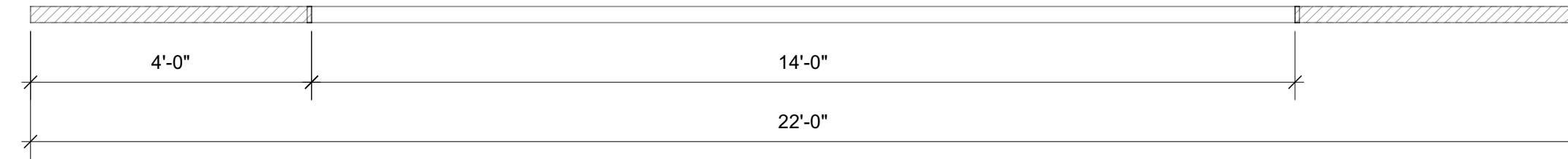
3 **A2 WAREHOUSE WALL SIDE SECTION**
Scale: 1/2" = 1'-0"

General Notes

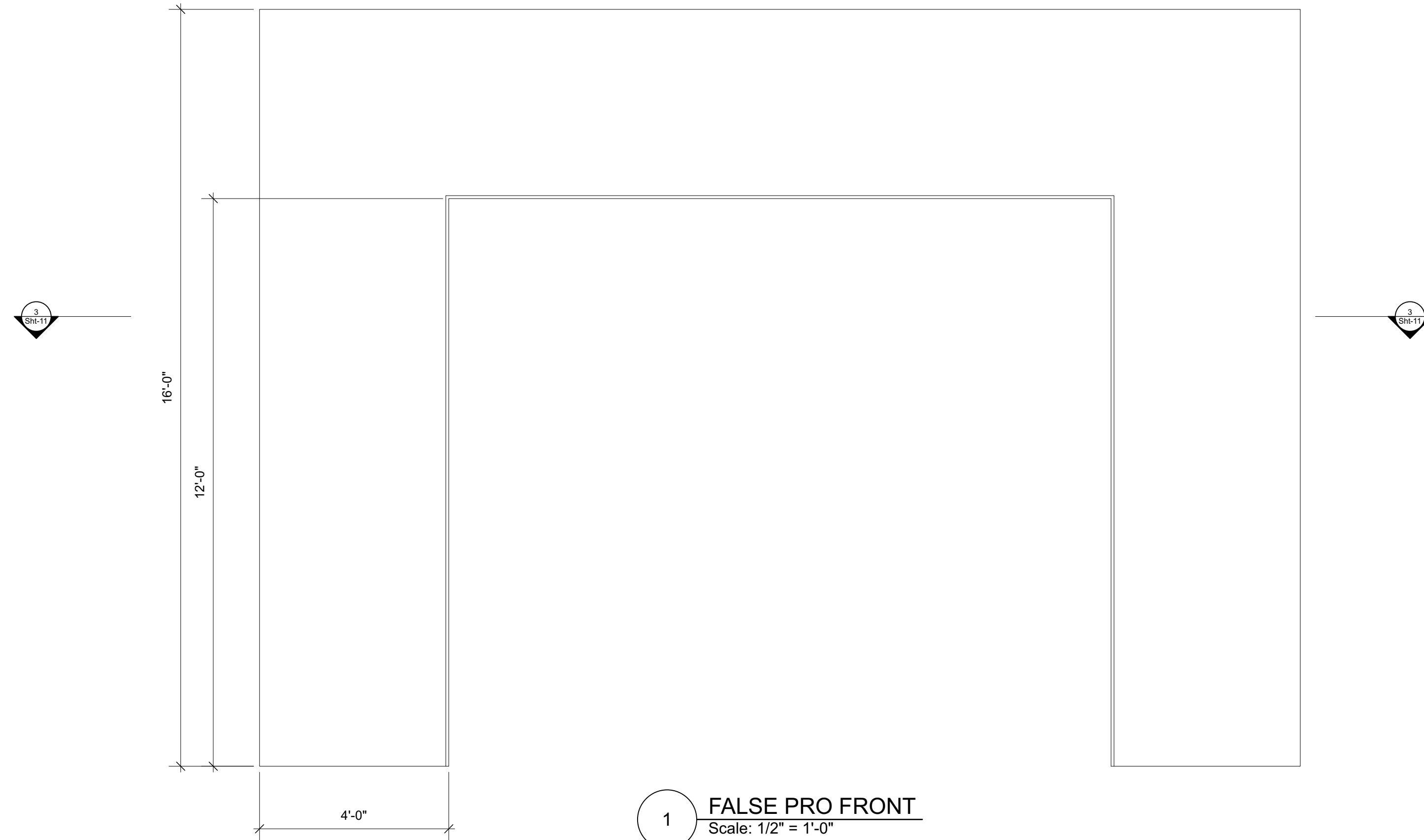
1. WINDOW "GLASS" - COVER WITH CUT TRANSLUCENT WINDOW FILM FOR BROKEN/DIRTY GLASS EFFECT
2. WINDOW OUTER TRIM IS 2" TYPICAL
3. MULLIONS/MUTINS ARE 2" X 2" TYP
4. WINDOW REVEAL IS 4"

MR. BURNS, A POST ELECTRIC PLAY

A2 Warehouse Wall	Date : 11/15/23
MISSOURI STATE UNIVERSITY - COGER THEATRE	Scale : 1/2" = 1'-0"
Director : KAREN SABO	Sht-10 OF
Designer : HARMONY SCHREEFEL	
Revisions : 12-29-23	

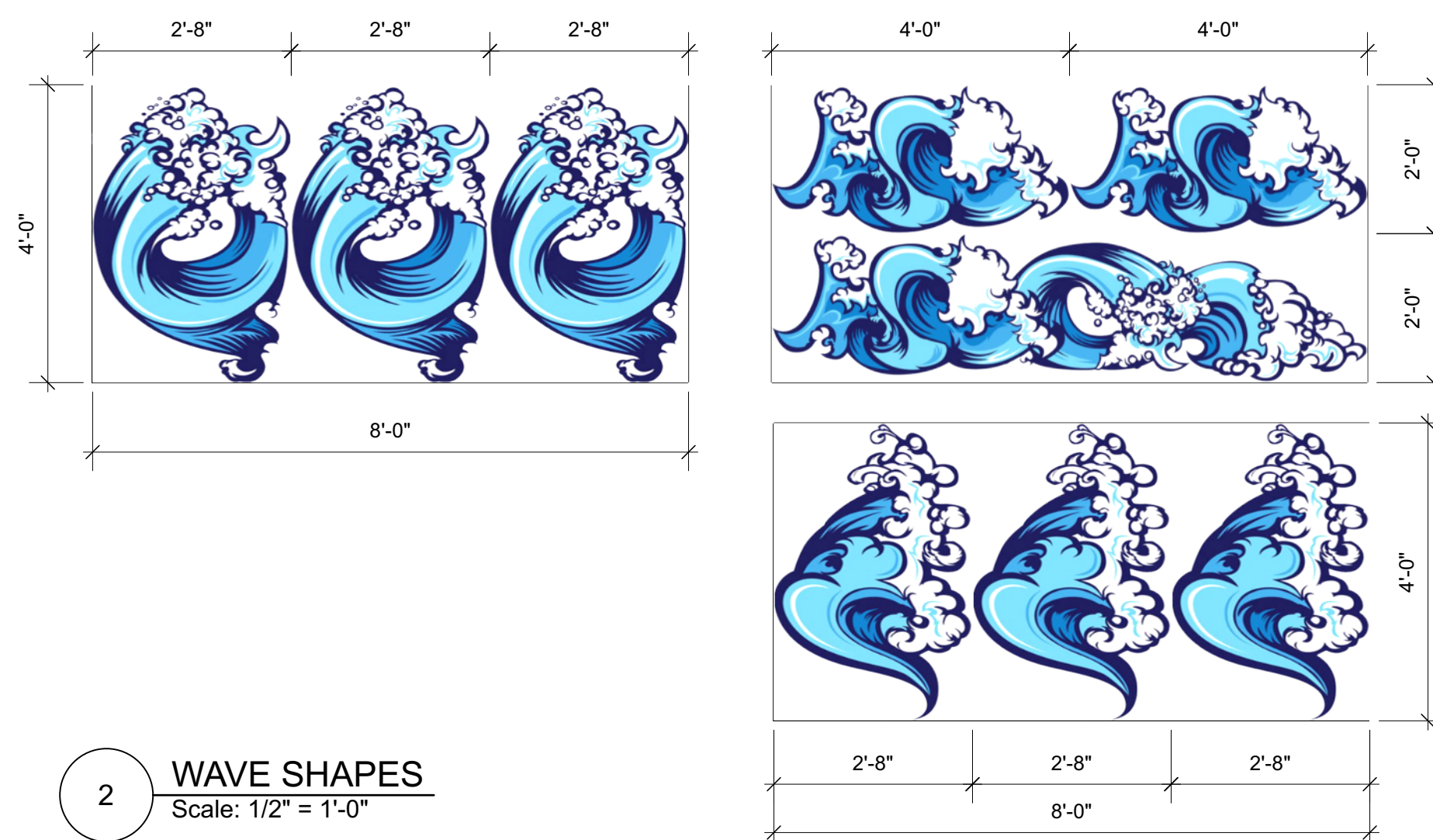


3 FALSE PRO TOP SECTION
Scale: 1/2" = 1'-0"



1 FALSE PRO FRONT
Scale: 1/2" = 1'-0"

NOTE: APPLY 2' FOAM CARVED/CUTOUT SHAPES OF SIMPSON HEADS ALONG TOP
-LEGS* WILL HAVE APPLIED FOUND OBJECTS AND SHADES* MASKS ATTACHED TO SURFACE
-MASKS NEED TO BE REMOVABLE

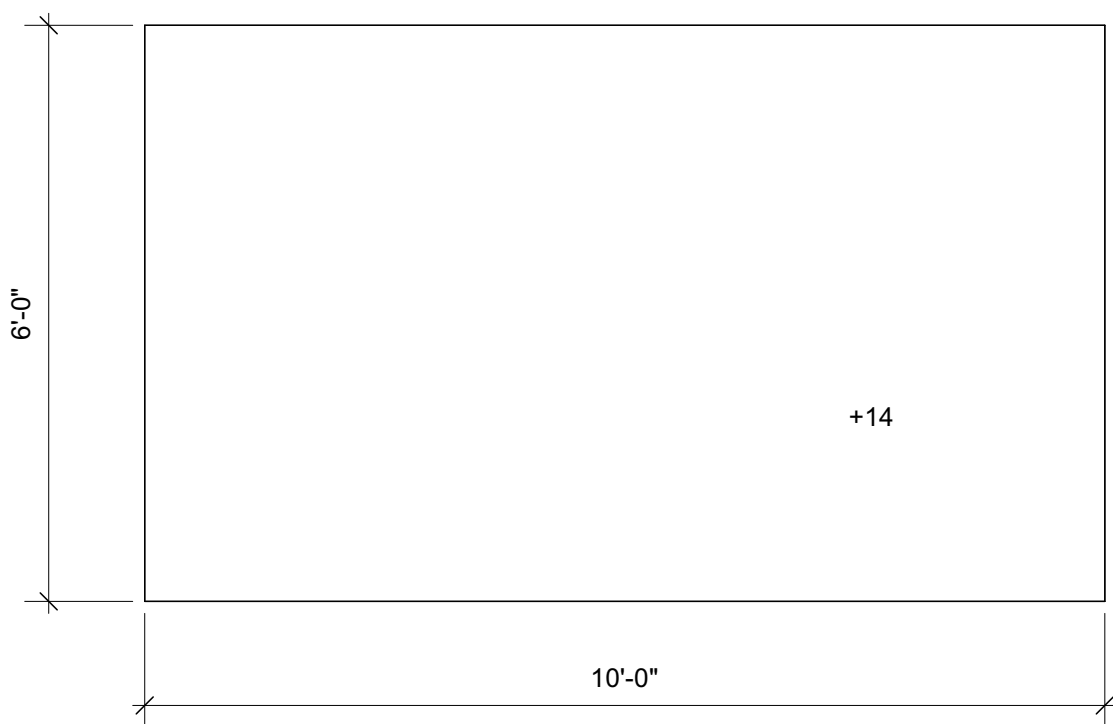


2 WAVE SHAPES
Scale: 1/2" = 1'-0"

NOTE: WAVES ARE LIGHTWEIGHT CUTOUTS (MAYBE CARDBOARD- BUT MOST LIKELY LUAUN)
-WILL BE CARRIED (AND CHOREOGRAPHED WITH) BY ACTORS
-NEED TO BE SELF SUPPORTING WHEN SET DOWN

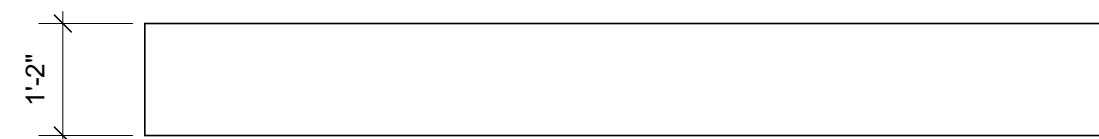
MR. BURNS, A POST ELECTRIC PLAY

A3 FALSE PRO	Date : 11/15/23
MISSOURI STATE UNIVERSITY - COGER THEATRE	Scale : 1/2" = 1'-0"
Director : KAREN SABO	Sht-11 OF
Designer : HARMONY SCHREEFEL	
Revisions : 12-29-23	

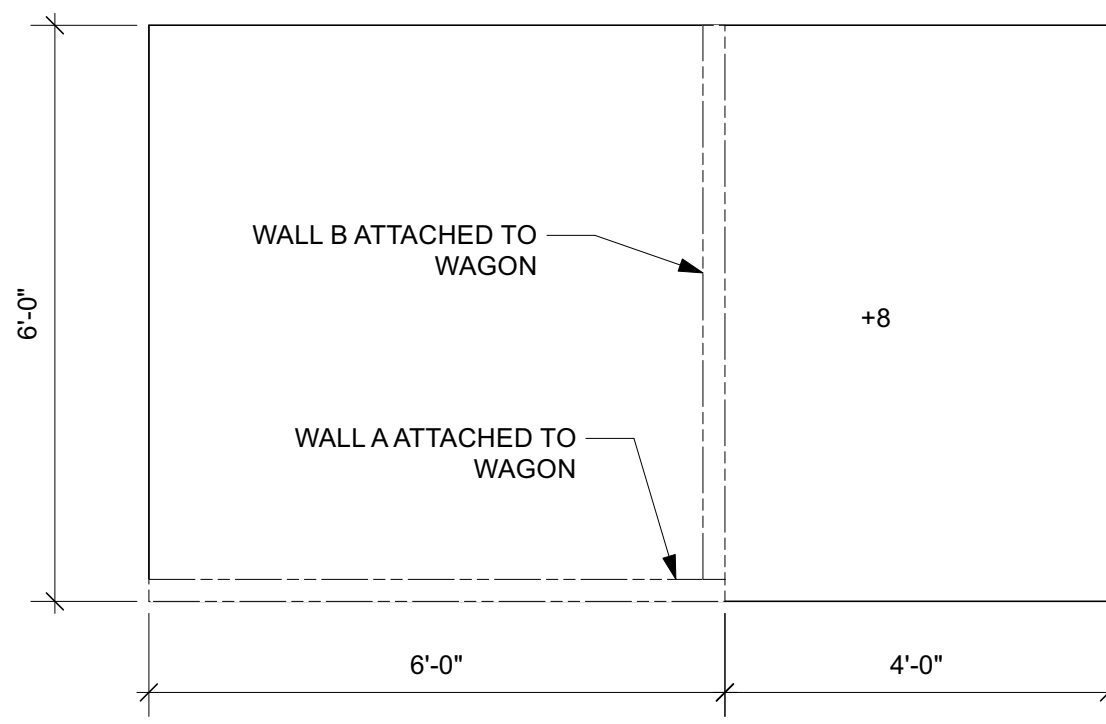


1 **BOAT WAGON A TOP**
Scale: 1/2" = 1'-0"

NOTE: USE STOCK METAL WAGON WITH AIR BRAKES

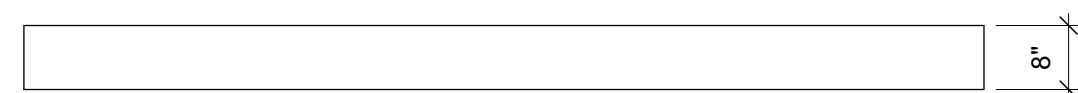


2 **BOAT WAGON A FRONT**
Scale: 1/2" = 1'-0"

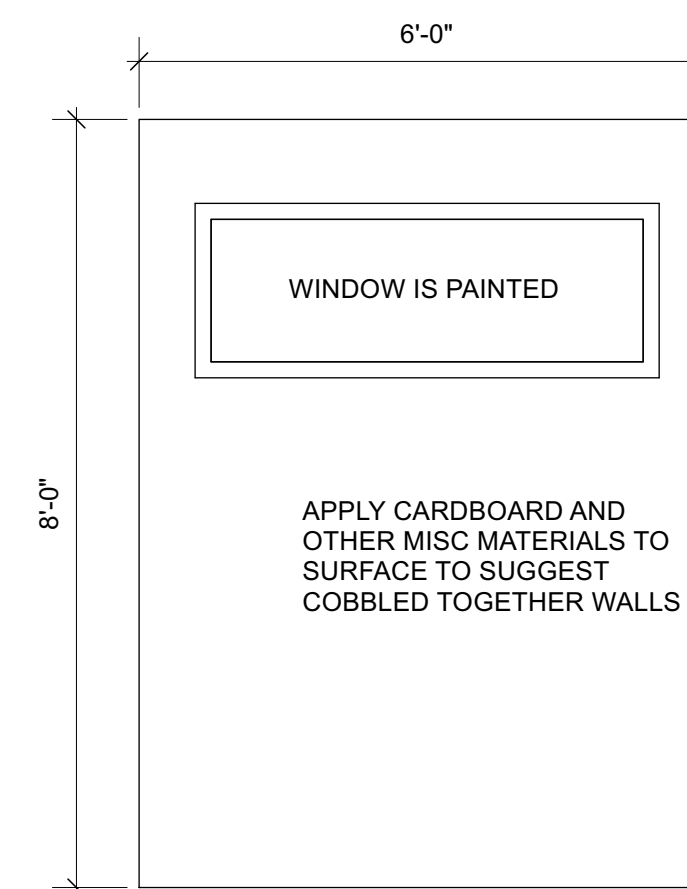


3 **BOAT WAGON B TOP**
Scale: 1/2" = 1'-0"

NOTE: USE STOCK METAL WAGON WITH AIR BRAKES

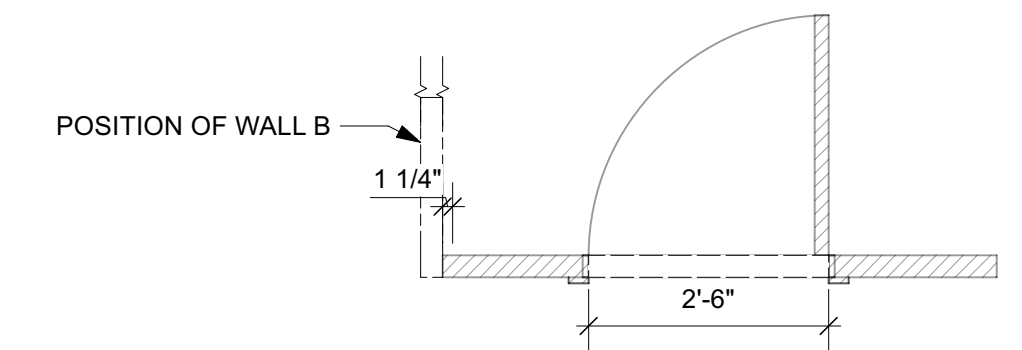


4 **BOAT WAGON B FRONT**
Scale: 1/2" = 1'-0"

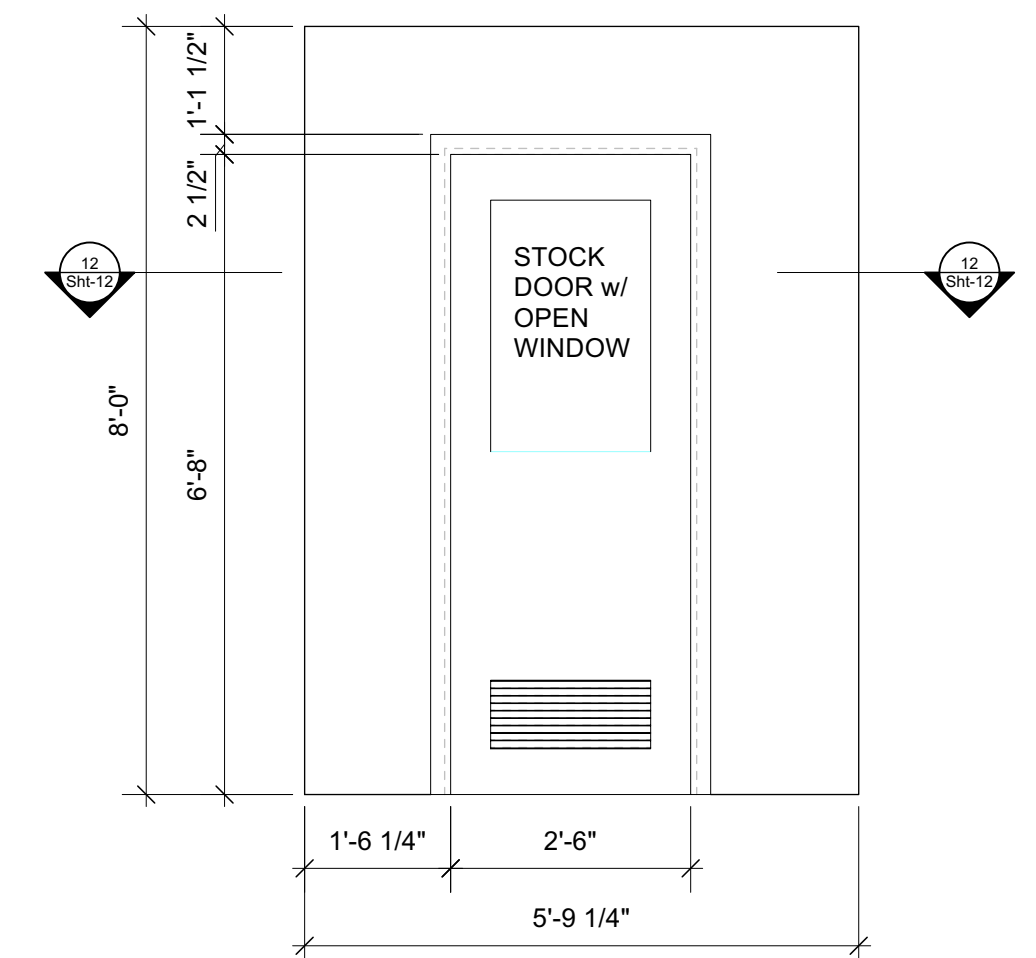


5 **BOAT WALL A**
Scale: 1/2" = 1'-0"

NOTE: WALLS SHOULD NOT LOOK PERFECT. THESE ARE WALLS BUILT WITH HAND TOOLS AND COBBLED TOGETHER MATERIALS
-USE STOCK WALLS AS POSSIBLE

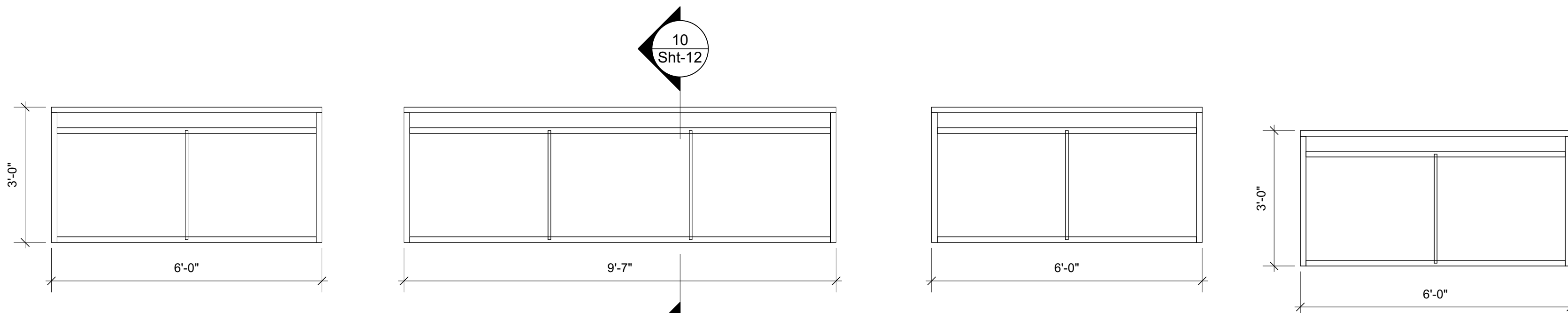
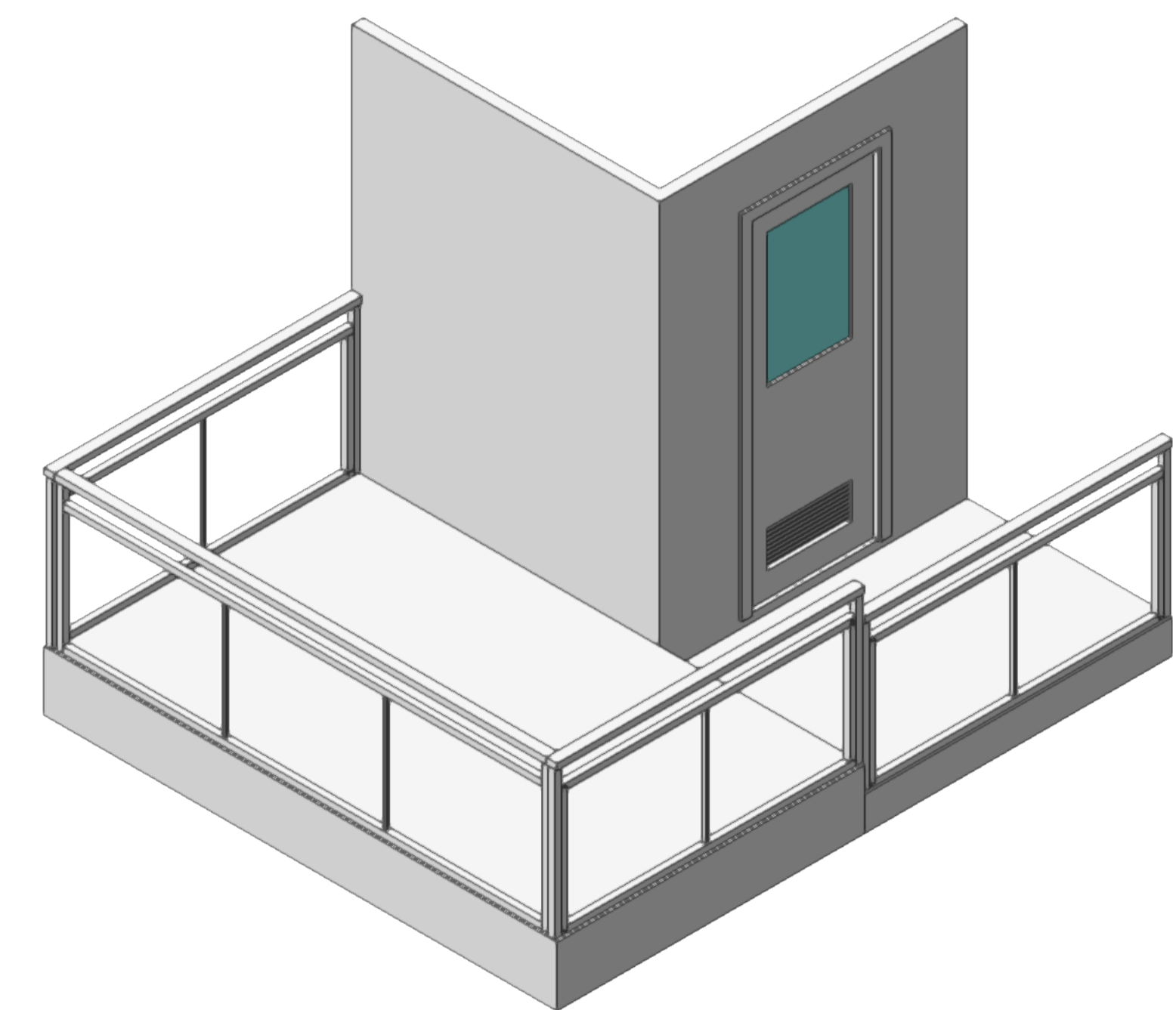


9 **WALL B TOP SECTION**
Scale: 1/2" = 1'-0"



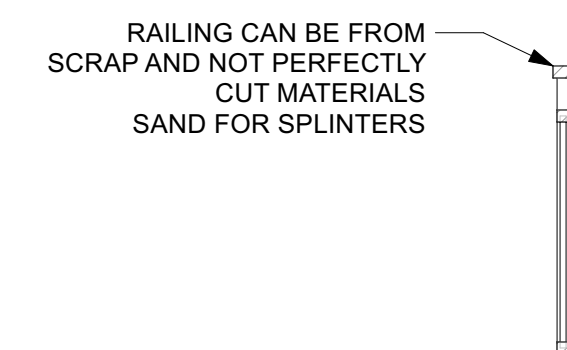
6 **BOAT WALL B**
Scale: 1/2" = 1'-0"

USE STOCK WALLS AS POSSIBLE - OKAY IF DOOR IN SLIGHTLY DIFFERENT POSITION.



7 **BOAT RAILING**
Scale: 1/2" = 1'-0"

NOTE: RAILING CAN/SHOULD BE "MESSY" YET STURDY
-ACTORS WILL BE DOING STAGE COMBAT ON/AROUND RAILING



10 **BOAT RAIL SECTION**
Scale: 1/2" = 1'-0"

MR. BURNS, A POST ELECTRIC PLAY

A3 BOAT	Date : 11/15/23
MISSOURI STATE UNIVERSITY - COGER THEATRE	Scale : 1/2" = 1'-0"
Director : KAREN SABO	Sht-12 OF
Designer : HARMONY SCHREEFEL	
Revisions : 12-29-23	