

***HAMLET***

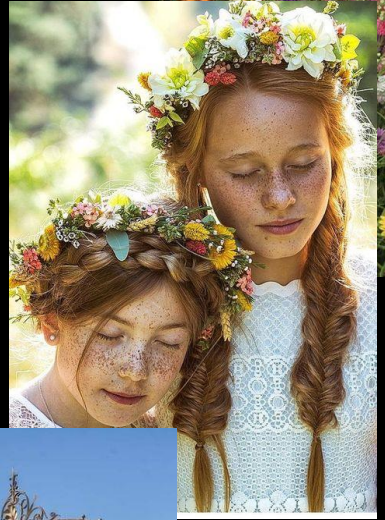
**OPHELIA**

---

260 Costume Design Project

# CONCEPT COLLAGE

Ophelia  
1.  
L'onde calme et noire où  
Blanche Ophelia flotte  
toute très lentement



# 1480'S /1490'S RENAISSANCE



# OPHELIA COLOR CONCEPT



# HISTORICAL REFERENCES HAIR & MAKEUP



# LATE 15TH CENTURY BEAUTY

## Makeup:

The general trend during the fifteenth century was toward **understated, discreet makeup**, so women did not use bold colors for rouge or eye makeup. Instead they used a variety of treatments to make their skin appear pale and used subtle shades of pink to add blush to their cheeks or red to color their lips.

- Pale white skin
- Some pink hued rouge on cheeks, lips, and eyes

## Hair:

Blond hair was fashionable, with a range of up-dos depending on location and status.

# HAIR & MAKEUP CONCEPT COLLAGE

